

# The Building Society

## Meeting & Venue hire



# Welcome to The Building Society

## A collaborative workspace to inspire ideas and action across the built environment



# The Building Society Fitzrovia

Fitzrovia  
Meeting & Venue hire



# Formal Meeting Rooms

## Ground Floor Overview

### Large Formal Meeting Rooms

### Small Formal Meeting Rooms



## Pricing

### Non-Members P/Hr

- Large Meeting: £90
- Medium Meeting: £50
- Small Meeting: £30

### Members

- Discount applied to all rates

## Spaces

### Large

Room 1: 269 SqFt

Room 2: 291 SqFt

- Both capacity: x12 seated

### Medium

Room 3: 100 SqFt

- Capacity: x4 seated

### Small Booth

Rooms 4-5

- Capacity: x2 seated

*Catering options available*

## Equipment

- TV Screens
- Video Call & Screen-share
- Zoom Conferencing
- Recording Technology
- Flip Charts
- Magnetic Wall for Room 1 & 2

## Usage

- Presentations
- Board Meetings
- Formal Meetings
- Design Reviews
- Project Reviews
- Video Conferences
- Training Sessions



# Casual Meeting Space

## Ground Floor Overview

### Interactive Conference Table

### Casual Meeting Space



## Pricing

### Non-Members

- Hourly: £60
- Half-day (Mon-Fri): £220
- Full-day (Mon-Fri): £460

In addition, prices for full network area (weekends and evenings only)

- Half-day (W/end): £600
- Full-day (W/end): £1000
- Evening (18:00-23:00): £600

### Members

- Discount applied to all rates

## Spaces

### Interactive Conference Table

- Capacity: x20 seated

### Network Area 548 SqFt

- Capacity: x60 seated  
*Evening & Weekends only*

In addition, you can hire out the area for an event which can hold up to 200 for a reception.

*Catering options available*

## Equipment

- Interactive TV Screen
- Video Call & Screen-share
- Zoom Conferencing
- Recording Technology
- Flip Charts

## Usage

- Informal Meetings
- Workshops & Reviews
- Training Sessions
- Project Reviews
- Catered Dinners
- Social Occasions



# Pods

## Ground Floor Overview



## Pods

## Pricing

- Non-Members**
  - Hourly: £50
- Members**
  - Discount applied to all rates

## Spaces

### **Three Acoustic Pods**

- Each seats 4 people

## Equipment

- TV Screens
- AV Equipment
- Video Call & Screen-share
- Zoom Conferencing
- Recording Technology
- Controlled Lighting
- Ventilation

## Usage

- Training Sessions
- Presentations
- Workshops & Reviews
- Design Team Meetings



# Conference, Events & Lounge Space

## Lower Ground Overview

Lounge Space

Conference & Event Space



## Pricing

### Non-Members

- Hourly: £140
- Half-day (Mon-Fri): £460
- Full-day (Mon-Fri): £940
- Half-day (W/end): £600
- Full-day (W/end): £1000
- Evening (18:00-23:00): £600

### Members

- Discount applied to all rates

## Spaces

### Conference & Events Space 687 SqFt

- Theatre: x80
- Reception: x120
- Classroom: x60
- Boardroom: x20
- U-Shape: x20

### Downstairs Lounge Space 431 SqFt

In addition, our downstairs reception lounge can also be booked at an extra charge and has the capacity of 120 people.

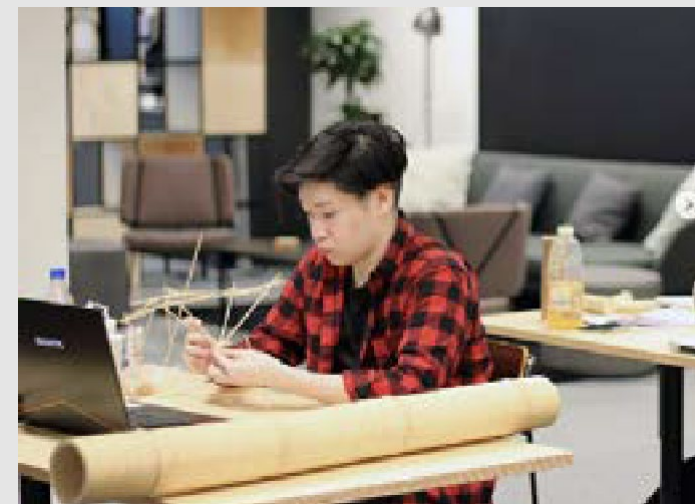
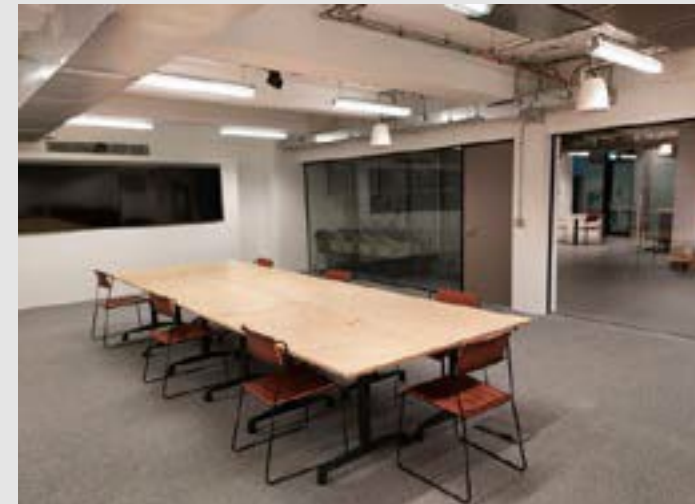
*Catering options available*

## Equipment

- TV Screens
- AV Equipment
- Video Call & Screen-share
- Zoom Conferencing
- Microphones
- Recording Technology
- Flip Charts
- Sound System
- Dimmable Lighting

## Usage

- Training Sessions
- Conferences & Talks
- Presentations
- Workshops & Reviews
- Board Meetings
- Fitness Classes
- Parties & Social Occasions
- Design Team Meetings



# Location & Contact

## Contact

T +44 (0)330 551 9499

E [info@thebuildingsociety.org](mailto:info@thebuildingsociety.org)

[thebuildingsociety.org](http://thebuildingsociety.org)

## Address

The Building Society  
55 Whitfield Street, Fitzrovia,  
London, W1T 4AH

## Connectivity

- King's Cross & Eurostar, 15 minute walk
  - Euston, 10 minute walk
- Close by to:
- Victoria Line & Gatwick Express
  - Central Line & The City
  - Circle Line & Heathrow Express





# The Building Society Wimbledon

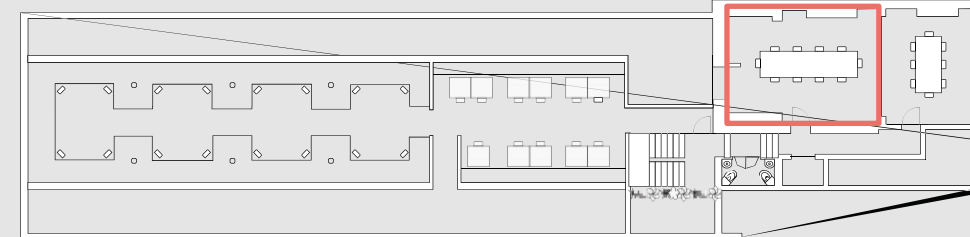
Wimbledon  
Meeting & Venue hire



# Large Meeting Room

## Upper Floor Overview

## Large Meeting Room



## Pricing

### **Non-Members**

— Hourly: £90

### **Members**

— Discount applied to all rates

## Space

### **Large**

Room 1: 357 SqFt

— Capacity: x12 seated

*Catering options available*

## Equipment

- TV Screens
- Video Call & Screen-share
- Zoom Conferencing, and BOYD
- Recording Technology
- Flip Charts

## Usage

- Presentations
- Board Meetings
- Formal Meetings
- Design Reviews
- Project Reviews
- Video Conferences
- Training Sessions



# Medium Meeting Room

## Upper Floor Overview

## Medium Meeting Room

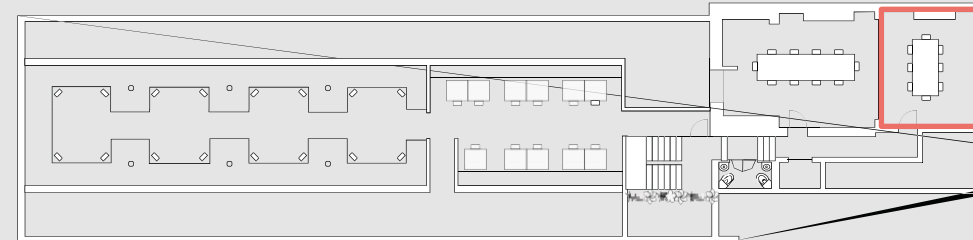
## Pricing

### Non-Members

- Hourly: £50

### Members

- Discount applied to all rates



## Space

### Medium

Room 2: 205 SqFt

- Capacity: x8 seated

*Catering options available*

## Equipment

- TV Screens
- Video Call & Screen-share
- Zoom Conferencing, and BOYD
- Recording Technology
- Flip Charts

## Usage

- Presentations
- Board Meetings
- Formal Meetings
- Design Reviews
- Project Reviews
- Video Conferences
- Training Sessions



# Pods

## Spaces

### Three Acoustic Pods

- 2 x Pods seat 6 people
- 1 x Pod seats 4 people

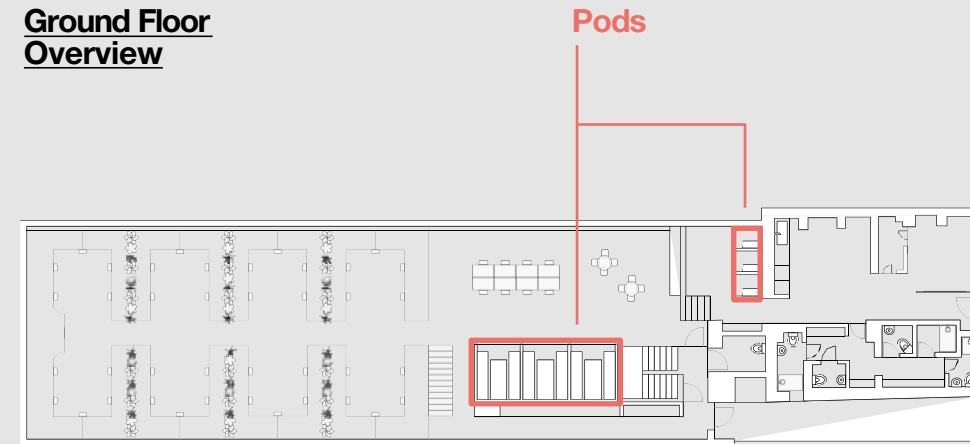
## Equipment

- TV Screens
- AV Equipment
- Video Call & Screen-share
- Zoom Conferencing
- Recording Technology
- Controlled Lighting
- Ventilation

## Usage

- Training Sessions
- Presentations
- Workshops & Reviews
- Design Team Meetings

## Ground Floor Overview



## Pricing

### 4-Seater

### Non-Members

- Hourly: £30

### 6-Seater

### Non-Members

- Hourly: £50

### Members

- Discount applied to all rates



# Location & Contact

## Contact

T +44 (0)330 551 9499

E [info@thebuildingsociety.org](mailto:info@thebuildingsociety.org)

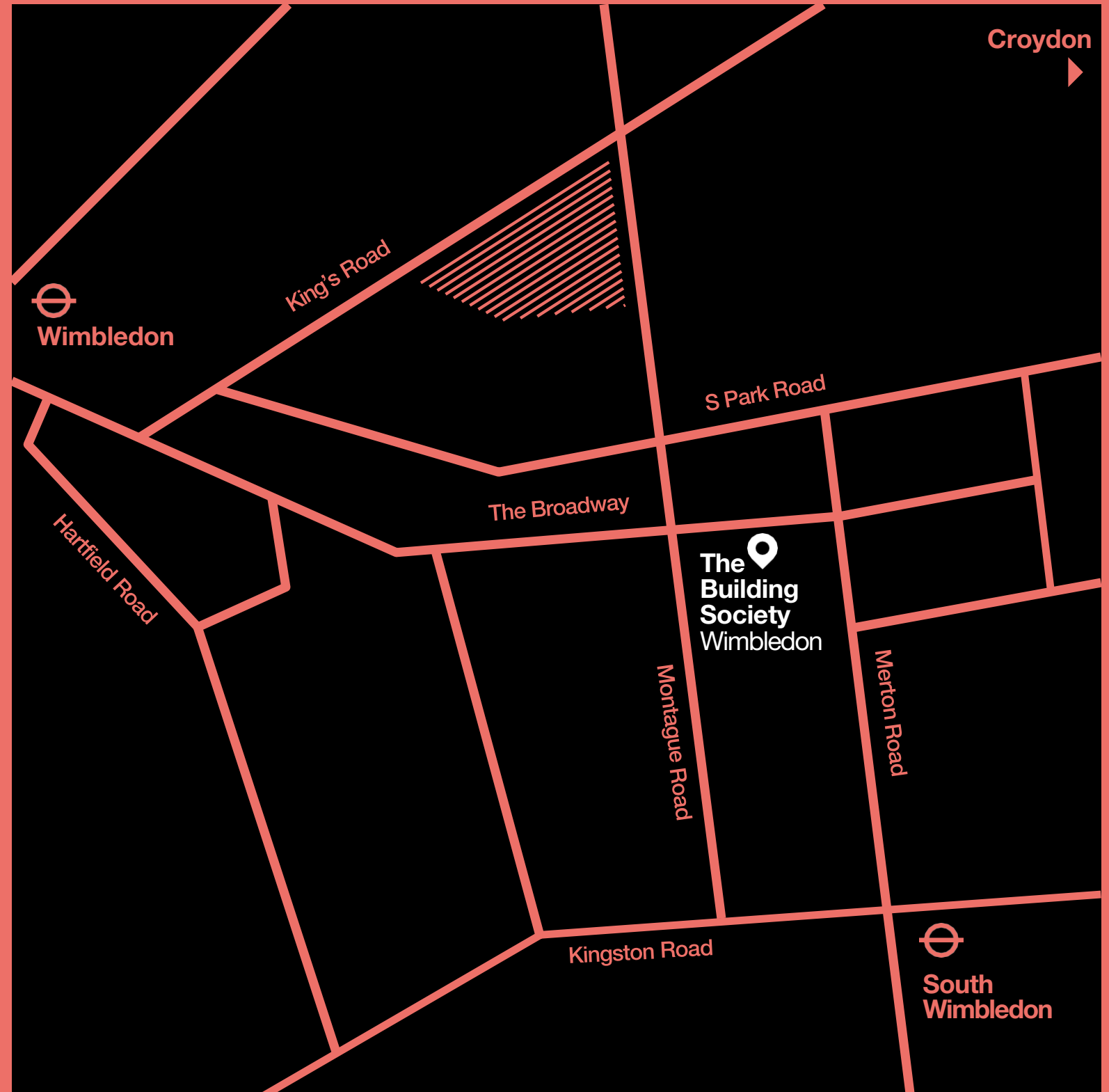
[thebuildingsociety.org](http://thebuildingsociety.org)

## Address

The Building Society  
241 The Broadway,  
London, SW19 1SD

## Connectivity

- Wimbledon  
11 minute walk
- South Wimbledon  
7 minute walk



# Costs & Conditions

## **Staff**

Quoted and charged for events that are outside of normal office hours.

## **Cleaning**

Quoted and charged depending on scale of the event.

## **Catering**

We have a number of catering packages available depending on the event you are hosting. Please enquire for more detail.

- Meeting Package: £7 pp
- Breakfast Package: £12 pp
- Lunch Package: £15 pp
- Premium Lunch Package: £20 pp
- Evening Drinks Package: £18 pp
- Dinner: Priced upon request
- Events: Priced upon request

*Dietary requirements  
accommodated*

## **Deposits & Cancellation Fees**

50% deposit is applicable to your booking upon confirmation.

Cancellation fees may apply, please enquire for more details.

# The Building Society

